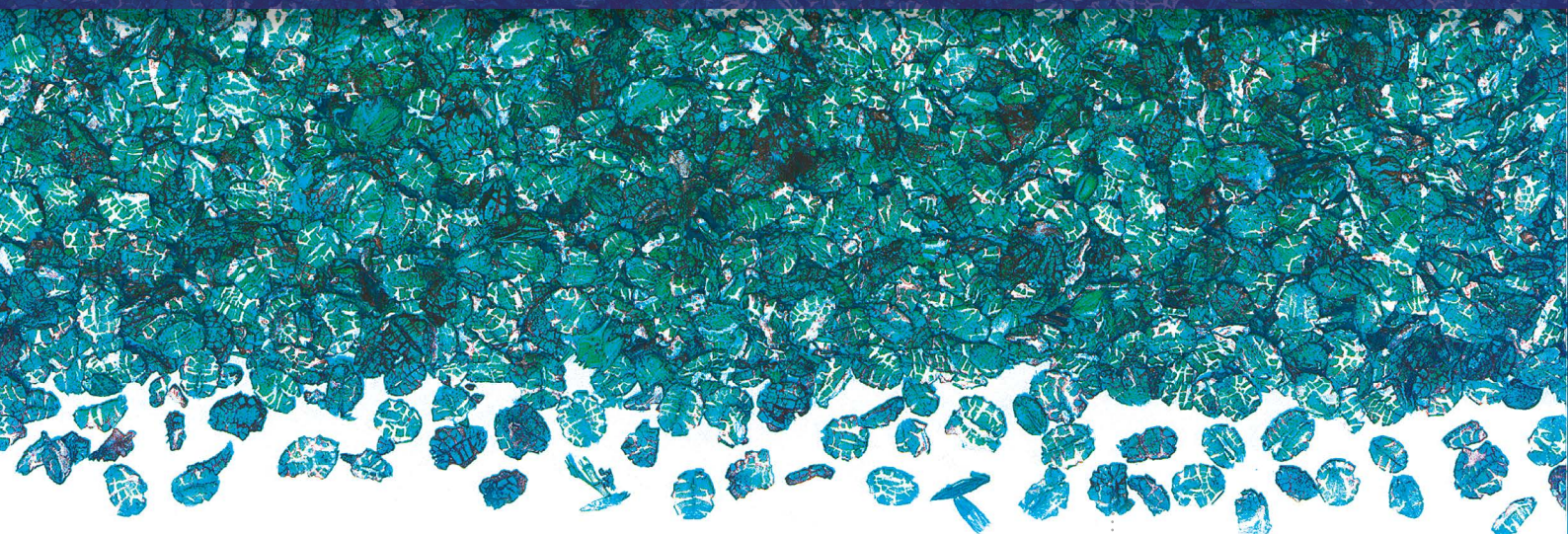


# Viryl / Strong



Viryl is used against rodents inside and around buildings. Viryl is available on different cereal supports. However, Biosix has developed a black rat formulation (called BRF) on basis of mix of cereals specially flavoured. Viryl is available in bulk or wrapped in sachets of 25g, 50g and 100g.

## Recommendations of usage

Determine areas where rats and/or mice will most likely find and consume the bait. Place the baits in these areas. Generally, these areas are along walls, by gnawed openings, in or beside burrows, in corners and concealed places, between floors and walls, or in locations where rodents or their signs have been observed.

It is important to use small quantities of baits in a lot of different places than to use big quantities but in a few places.

When consumption stops, leave some bait to prevent re-infestation.

Usage of bait station ensures security and quality of product.

## Dosage

### Rats

45g to 50g of baits every 10m (5m in case of high infestation).

### Mice

10g to 25g of baits every 5m (3m in case of high infestation)

## FORMULATION TYPE

Cereals

## ACTIVE INGREDIENT

Brodifacoum 0.005%

Brodifacoum 0.0025%

## CHEMICAL CLASS

4-hydroxycoumarin. Anticoagulant of 2nd generation

## MECHANISM OF ACTION

Vitamin K antagonist leading to anticoagulation of rodents

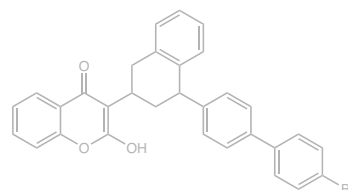
## TARGET

Rats and mice - Specific formulation against black rats

## PACKAGING

Professional: As from 3 kg depending of countries.

Amateur: Up to 150 g by dose of maximum 25 g.



**Brodifacoum**