









**BEKINA® BOOTS**

<b>Size range</b>		
• EU	36 - 48	
• UK	3.5 - 13	
• US	4 - 15	
The testresults in this technical datasheet are performed on size EU 42, UK 8, US 9		
<b>Weight / pair</b>		
• Non-safety	±   300 g	
• Steel toe cap	±   490 g	
• Steel toe cap & midsole	±   630 g	
<b>Colours</b>		
• Non-safety	• Steel toe cap	• Steel toe cap & midsole
		
		
		
green - black	white - blue	green - black
	green - black	white - blue
	blue - blue	green - black
		yellow - black
		black - black

**Upper**

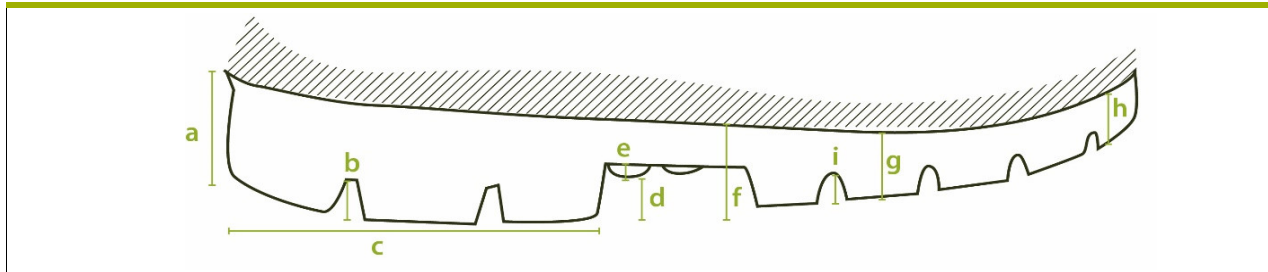
<b>A. Dimensions</b>		
• Height	outer measure: 38,0 cm	
	cutting edge: 31,0 cm	
• Foot length	outer measure: 30,0 cm	
	inner measure: 28,0 cm	
<b>B. Thickness</b>		
• Upper edge	2,8 - 3,2 mm	
• Calf	2,9- 3,1 mm	
• Shinbone	2,8 - 2,9 mm	
• Ankle	3,5 - 3,9 mm	
• Heel	3,9 - 5,4 mm	
<b>C. Raw material</b>		
	NEOTANE® (proprietary polyurethane compound)	
<b>D. Density</b>		
	0,65 - 0,70 g/ml	
<b>E. Tensile strength</b>		
(incl. lining)	10 ± 2 N/mm <sup>2</sup>	
<b>F. Elongation</b>		
(incl. lining)	600 ± 100 %	
<b>G. Hardness</b>		
	43 ± 2 Sh A	
<b>H. Tear strength</b>		
(incl. lining)	10 ± 2 N/mm	
<b>I. Aging</b>		
(incl. lining)	<b>7 days at 70°</b>	<b>14 days at 70°</b>
• Tensile strength	11,6 MPa	9,0 MPa
• Elongation	580 ± 20 %	600 ± 20 %
• Tear strength	11,4 N/mm	9,0 N/mm

<b>J. Chemical resistance</b>	
	see detailed list
<b>K. Environmental temperature</b>	
• Maximum	± 100 °C
• Minimum	Cold insulation down to - 20 °C

**Lining**

<b>A. Material</b>	
	PU coating on polyester fabric
<b>B. Seams</b>	
	knitted seams

**Outsole profile**



<b>A. Dimensions</b>		
• Heel		
• Thickness	(a)	32,0 mm
• Profile depth	(b)	8,6 mm
• Length	(c)	90,3 mm
• Width		81,2 mm
• Middle foot		
• Height	(d)	12,0 mm
• Ladder anti-slip grips	(e)	2,0 mm
• Outsole		
• Thickness	(f)	23,3 mm
	(g)	20,0 mm
	(h)	17,9 mm
• Profile depth	(i)	6,7 mm
<b>B. Raw material</b>		
	NEOTANE® (proprietary polyurethane compound)	
<b>C. Density</b>		
	0,65 - 0,70 g/ml	
<b>D. Mechanical characteristics</b>		
	see upper (E) - (F) - (H)	
<b>E. Energy absorption of the seat region</b>		
	25 - 35 J (requirement ≥ 20 J)	
<b>F. Antistatic footwear</b>		
	dry: $1 \times 10^8 - 1 \times 10^9$ Ohm	
	wet: $1 \times 10^7 - 1 \times 10^9$ Ohm	
<b>G. Abrasion resistance</b>		
	50 mm <sup>3</sup>	



**TECHNICAL DATA SHEET**  
**BEKINA® BOOTS Steplite EASYGRIP®**

<b>H. Hardness</b>	
	60 ± 10 Sh A
<b>I. Footwear slip resistance</b>	
	SRC
<b>J. Chemical resistance</b>	
	see enclosed list

**Safety**

	Standard	Required	Type	Result
<b>Toe cap</b>				
Impact resistance (200 J)	ISO 20345:2011	> 14 mm	Metallic	20,0 mm
Impact resistance (125 J)	CSA Z195-14	> 12,7 mm	Metallic	13,2 mm
Impact resistance at -18°C (125 J)	CSA Z195-14	> 12,7 mm	Metallic	17,3 mm
Compression resistance	ISO 20345:2011	> 14 mm	Metallic	17,0 mm
Compression resistance	ASTM F2413-18	> 12,7 mm	Metallic	24,3 mm
<b>Toe cap and midsole</b>				
Nail penetration resistance	ISO 20345:2011	> 1100 N	Metallic	1345 N
Impact resistance (200 J)	ISO 20345:2011	> 14 mm	Metallic	15,5 mm
Impact resistance (125 J)	CSA Z195-14	> 12,7 mm	Metallic	16,6 mm
Impact resistance at -18°C (125 J)	CSA Z195-14	> 12,7 mm	Metallic	21,5 mm
Compression resistance	ISO 20345:2011	> 14 mm	Metallic	18,0 mm
Compression resistance	ASTM F2413-18	> 12,7 mm	Metallic	21,7 mm
Width of steel toe cap	outer measure: 87,3 mm			
Height of steel toe cap	outer measure: 44,2 mm			


**Certificates**

• Non-safety		• Steel toe cap			• Steel toe cap & midsole		
green - black	white - blue	green - black	white - blue	blue - blue	green - black	yellow - black	black - black
ISO 20347:2012 PFI 2001737-02-86	ISO 20347:2012 PFI 2001737-02-86	ISO 20345:2011 PFI 1910589-02-86	ISO 20345:2011 PFI 1910589-02-86	ISO 20345:2011 PFI 1910589-02-86	ISO 20345:2011 PFI 1910575-02-86	ISO 20345:2011 PFI 1910575-02-86	ISO 20345:2011 PFI 1910575-02-86
		CSA Z195-14 CSA Group 70048629	CSA Z195-14 CSA Group 70048629	CSA Z195-14 CSA Group 70048629	CSA Z195-14 CSA Group 70048629	CSA Z195-14 CSA Group 70048629	CSA Z195-14 CSA Group 70048629
		ASTM F2413-18 CSA Group 70048629	ASTM F2413-18 CSA Group 70048629	ASTM F2413-18 CSA Group 70048629	ASTM F2413-18 CSA Group 70048629	ASTM F2413-18 CSA Group 70048629	ASTM F2413-18 CSA Group 70048629
		AS 2210.3:2019 Sai Global SMKH21341	AS 2210.3:2019 Sai Global SMKH21341	AS 2210.3:2019 Sai Global SMKH21341			AS 2210.3:2019 Sai Global SMKH21341



**TECHNICAL DATA SHEET**  
**BEKINA® BOOTS Steplite EASYGRIP®**

**Accessories**

<b>Insole</b>		
Three layers		
• Toplayer	woven textile	
• Colour	green	
• Thickness	0,7 mm	
• Interlayer	needle-felt	
• Colour	cyan blue	
• Thickness	3,0 mm	
• Bottom	gel latex	
• Colour	black	
• Thickness	1,0 mm	
Washable at 30°C		